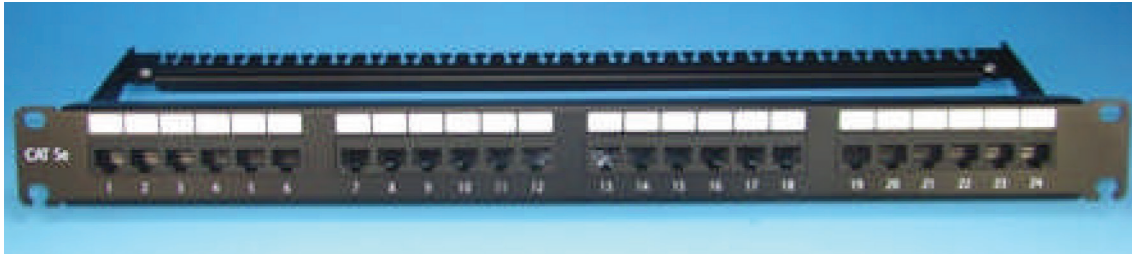


# ATS-C5E-N-24P

## 24 Port Horizontal Mount Category 5E Patch Panel



### Features

- Premium Quality
- Category 5E certified to meet all Cat 5E specifications
- Engineered for high speed transmissions for optimal performance
- Color coded TIA/EIA 568A (international) and TIA/EIA 568B (AT&T standard) wiring
- Industry standard 110 or Krone IDC connectors
- Rear Cable Management Bracket/Strain Relief Bar
- Includes tie wraps and mounting screws
- Panels include port numbering and write-on labeling areas
- 25 Year Warranty

### Material Standards

Metal Frame

IDC plastic: PC, UL 94V-O

IDC contact: Phosphor bronze w/  
200u" tin over 100u" nickel undercoat

Spring wire: Phosphor bronze w/  
50u" gold over 100u" nickel undercoat

Temperature: -40°C – 68°C

Humidity: 10% – 90% RH

Modular jack: 750 mating cycles

IDC block: 200 termination cycles

### Electrical Standards

Current Rating: 1.5A

Voltage: 150V

Insulation Resistance: 500m Ohm

Contact Resistance: 20m Ohm

DC Resistance: 0.1 Ohm