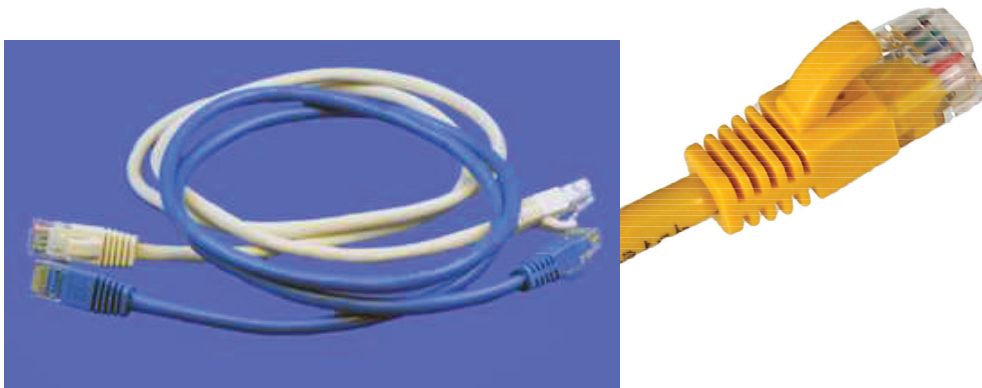


## ATS-PC8\*\*\*\*-L5EB Category 5E Patch Cords



### Features

High quality flexible network cable with snag-less universal boot for connecting two network ports or devices

Ethernet networks run over twisted pair (UTP) cable using patch cords for cross connections between walls and computers, patch panels and equipment, or between two pieces of equipment

Engineered to meet or exceed all ANSI/TIA-568-C.2 Category 5E mechanical and transmission performance specifications, wired to T568A/T568B wiring scheme

Accommodates T568A and T568B wiring applications

ETL Verified

Fully Tested with a lifetime warranty

Boot can be pulled back for easy access to retaining clip

\*Colors Available: Blue (L), White (W), Yellow (Y), Gray (G), Black (B)



### Part Number and Description

ATS-PC8\*6IN-L5EB  
*6 Inch Category 5E Patch Cord with Boots*

ATS-PC8\*01F-L5EB  
*1 Ft Category 5E Patch Cord with Boots*

ATS-PC8\*02F-L5EB  
*2 Ft Category 5E Patch Cord with Boots*

ATS-PC8\*03F-L5EB  
*3 Ft Category 5E Patch Cord with Boots*

ATS-PC8\*05F-L5EB  
*5 Ft Category 5E Patch Cord with Boots*

ATS-PC8\*07F-L5EB  
*7 Ft Category 5E Patch Cord with Boots*

ATS-PC8\*10F-L5EB  
*10 Ft Category 5E Patch Cord with Boots*

ATS-PC8\*14F-L5EB  
*14 Ft Category 5E Patch Cord with Boots*

ATS-PC8\*25F-L5EB  
*25 Ft Category 5E Patch Cord with Boots*