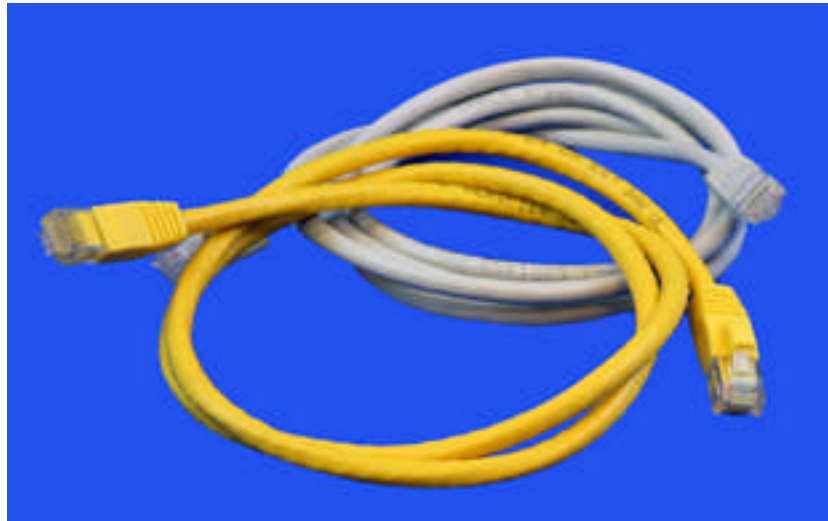




ATS-PC8*#F-L6B

BOOTED CATEGORY 6 PATCH CORD



FEATURES

- COMPLIANT WITH TIA/EIA CATEGORY 6 STANDARDS
- ACCOMMODATE T568A AND T568B WIRING APPLICATIONS
- ETL VERIFIED
- FULLY TESTED WITH A LIFETIME WARRANTY
- BOOT CAN BE PULLED BACK FOR EASY ACCESS TO RETAINING CLIP
- SUPPORT THESE SPEEDS AND PROTOCOLS:
 - *10 Megabit per second Ethernet (10 BASE-T)
 - *100 Megabit per second Fast Ethernet (100 BASE-TX)
 - *1 Gigabit per second gigabit Ethernet (1000 BASE-T or 1000 BASE-TX)

HIGH QUALITY FLEXIBLE NETWORK CABLE WITH SNAGLESS UNIVERSAL BOOT FOR CONNECTING TWO NETWORK PORTS OR DEVICES.

ETHERNET NETWORKS RUN OVER TWISTED PAIR (UTP) CABLE USING PATCH CORDS FOR CROSS CONNECTIONS BETWEEN WALLS AND COMPUTERS, PATCH PANELS AND EQUIPMENT, OR BETWEEN TWO PIECES OF EQUIPMENT.

PART NUMBER	DESCRIPTION
ATS-PC8*03F-L6B	3 Foot Category 6 Patch Cord with Boots
ATS-PC8*05F-L6B	5 Foot Category 6 Patch Cord with Boots
ATS-PC8*07F-L6B	7 Foot Category 6 Patch Cord with Boots
ATS-PC8*10F-L6B	10 Foot Category 6 Patch Cord with Boots
ATS-PC8*14F-L6B	14 Foot Category 6 Patch Cord with Boots
ATS-PC8*25F-L6B	25 Foot Category 6 Patch Cord with Boots

AVAILABLE IN

(*) COLORS: BLUE (L), WHITE (W), YELLOW (Y), GRAY (G), BLACK (B)