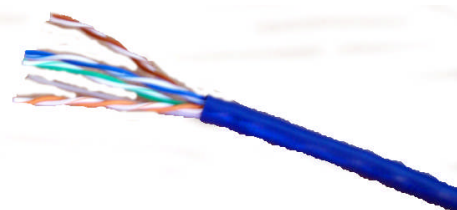
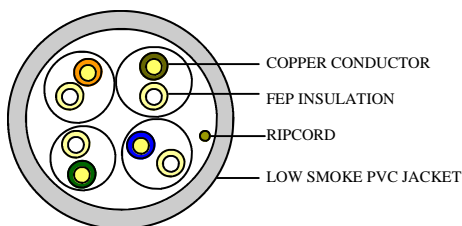




ATS-423CMP-6-NS-*

Category 6 Plenum Cable (400 MHz)
No Spline



CHARACTERISTICS		APPLICATIONS
Impedance	100 ± 15 Ohms	IEEE 802.3: 1000 BASE-T (Gigabit Ethernet)
Capacitance	17.1nf/1000FT Max	100 BASE-TX, 10 BASE-T
Capacitance Unbalanced (Pair to Ground)	330pF/100m Max	ANSI/TIA/EIA-854: 1000 BASE-TX
DC Resistance	28.6 Ohms/1000FT Max	155 Mp/s, 1.2 Gb/s ATM
DC Resistance/Unbalanced Pair	5% Max	ANSI X3.263: 100 Mb/s
Propagation Delay Skew	25nS/100m	IEEE 802.3af DTE Power (PoE)
Normal Velocity of Propagation	66%	4/16 Mb/s TOKEN RING
PACKAGING		Digital Video
1000 FT Easy Pull Box		Broadband and Baseband Analog Video
ATTENUATION-TO-CROSSTALK RATIO		CONSTRUCTION
At 100 MHz	24.4dB/Min.	4 Twisted Pair Cable
At 155 Mhz	16.2dB/Min.	Pair Insulation: FEP
At 250 Mhz	5.3dB/Min.	23 Awg Solid Copper
PAIR IDENTIFICATION		Ripcord
Pair 1	Blue, Blue/White	APPROVALS
Pair 2	Orange, Orange/White	UL 444, ISO 9001
Pair 3	Green, Green/White	UL, cUL, CSA, ETL
Pair 4	Brown, Brown/White	RoHS
JACKETS		NEC/CEC: CMP
Outer Jacket	Low Smoke PVC OD .205 ins. WT 31 lbs.	UL Listed CM, CMR, CMP
Jacket Colors Available in Blue, White, Yellow, Gray, Green		ANS/TIA/EIA 568B.2

ELECTRICAL PERFORMANCE										
Frequency MHz	Attenuation (dB/100m)		Near End Cross Talk (dB)		ACR (dB) Min	Power Sum (dB)			Return Loss (dB)	
	Max	EIA/TIA 568B Category 6	Min	EIA/TIA 568B Category 6		NEXT Min	ELFEXT Min	ACR Min	Min	EIA/TIA 568B Category 6
1	2	2	74.3	74.3	74.3	72.3	67.8	70.3	20	20
4	3.8	3.8	65.5	65.5	61.5	63.3	55.7	59.5	23	23
8	5.4	5.3	60.8	60.8	55.4	58.8	49.7	53.4	24.5	24.5
10	6	6	59.3	59.3	55.3	57.3	47.8	51.3	25	25
16	7.6	7.6	56.3	56.3	48.7	54.3	43.7	46.7	25	25
20	8.5	8.5	54.8	54.8	46.3	52.8	41.7	44.3	25	25
25	9.6	9.5	53.3	53.3	43.7	51.3	39.8	41.7	24.3	24.3
31.25	10.7	10.7	51	51	41.2	49.9	37.9	39.2	23.6	23.6
62.5	15.5	15.4	47.4	47.4	31.9	45.1	31.8	29.9	21.5	21.5
100	19.9	19.8	44.3	44.3	24.4	42.3	27.8	22.4	20.1	20.1
155	25.3	25.1	41.5	41.5	16.2	39.5	23.9	14.2	18.8	18.8
200	29.2	29	39.8	39.8	10.6	37.8	21.7	8.6	18	18
250	33	32.8	38.3	38.3	5.3	36.3	19.8	3.3	17.3	17.3
300	36.4	36.4	37.2	37.2	0.08	35.2	18.2	0	16.8	16.8
400	43	43	35.3	35.3	-	33.3	15.7	-	15.9	15.9



"Building Reliable Results"

www.atrasusa.com

704-966-0324