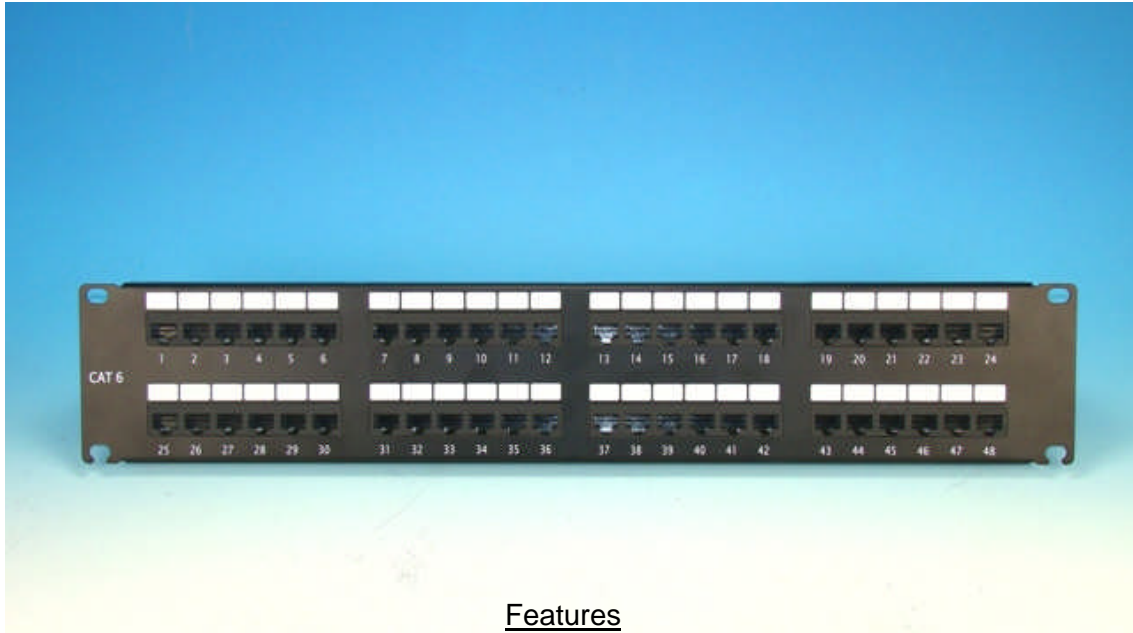




48 Port Horizontal Mount Category 6 Patch Panel  
ATS-C6-48P



Features

- Premium Quality
- Category 6 certified to meet all Cat 6 specifications
- Engineered for high speed transmissions for optical performance
- Color coded TIA/EIA 568A (international) and TIA/EIA 568B (AT&T standard) wiring
- Industry standard 110 or Krone IDC connectors
- Rear Cable Management Bracket/Strain Relief Bar
- Includes tie wraps and mounting screws
- Panels include port numbering and write-on labeling areas
- 25 Year Warranty

Material Standards

- Metal Frame
- IDC plastic: PC, UL 94V-O
- IDC contact: Phosphor bronze w/ 200u" tin over  
100u" nickel undercoat
- Spring wire: Phosphor bronze w/ 50u" gold over  
100u" nickel undercoat
- Temperature: -40°C - 68°C
- Humidity: 10% - 90% RH
- Modular jack: 750 mating cycles
- IDC block: 200 termination cycles

Electrical Standards

- Current Rating: 1.5A
- Voltage: 150V
- Insulation Resistance: 500m Ohm
- Contact Resistance: 20m Ohm
- DC Resistance" 0.1 Ohm

**ATRAS**

TITLE CAT6 48 PORT PATCH PANEL